



The BIG Change for
openSUSE Leap 15.3

GHCon2020



About Me



Douglas DeMaio

openSUSE Manager

- Marketing/PR
- Event Organizer
- Coordinate Event Sponsorship

Education

- MBA - Business
- BA - Education

Hobbies

- Fantasy Sports
- Mining
- Series Binge Watcher

Interesting Fact

Christopher Reeve was to blame for me breaking my arm (Superman 1978)

The Way to **openSUSE Leap 15.3**

About Me



Jump 15.2.1

The efforts to change how a distribution is built



Closing the Leap Gap

What is it & why does it matter.



Leap 15.3

What to expect with in coming releases of this openSUSE distribution



What is openSUSE Leap



Leap is trying to bridge “Community and Enterprise” the distribution is based on the latest version of SUSE Linux Enterprise available to the date, typically with a 12 months release cycle.

Leap 15.2 Retrospective told us that users value most the installer, stability, seamless migrations, and YaST. These would be then our strengths according to users! The distribution is often profiled as the more stable one and easy to use as there should be no radical or disruptive changes in between minor updates.

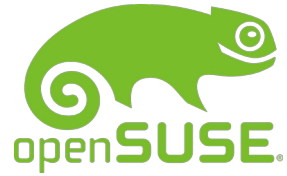
Some users say It’s the KDE distribution. Box says “The Linux Distribution for Beginners and Pros”

Closing the Leap Gap



- CtLG is a SUSE driven effort to bring Leap closer to SUSE Linux Enterprise than ever before. This brings quite some challenges but also open some new opportunities.
- Unification of openSUSE Leap and SUSE Linux Enterprise 15 code streams and feature set.
- Concept of building a community distribution by combining rpms from openSUSE Backports (community part) and SUSE signed SLE rpms (Enterprise part).
- The community gains access to the s390x, realtime...
- Tools and processes to allow community members to open features and create submit request directly against SUSE Linux Enterprise and make contributions to the ~ 4k of SLE pack

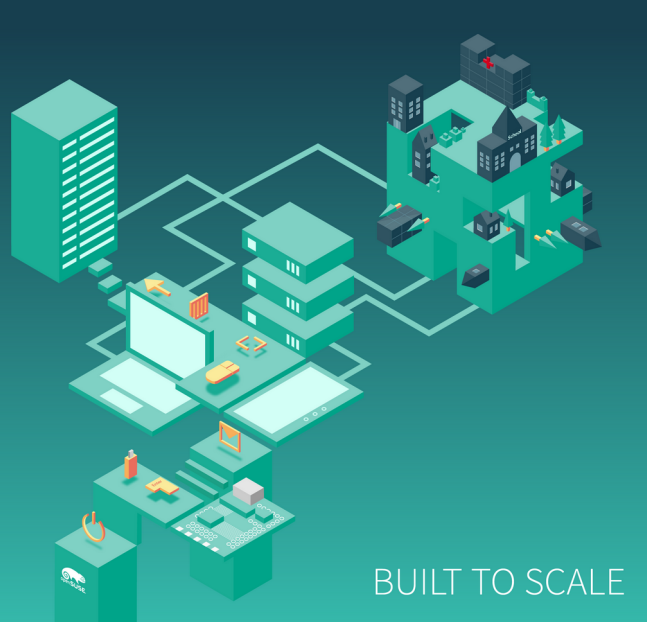
Closing the Leap Gap



Jump 15.2.1

- Distribution images available for testing since late August 2020. (Based on SLE 15 SP2 Updates)
- Submit requests were done against a single project (openSUSE:Jump:15.2) and OBS automatically redirects them
- Redirection and mirroring of Submit requests from openSUSE:Jump:15.2 in OBS to SUSE:SLE* projects in SUSE
- Internal OBS instance.
- Testing of “Seamless” migration to SUSE Linux Enterprise 15 SP2 block by
- Maintenance





Built to Scale

- Survey for the future of openSUSE on arm - ARMv6, ARMv7 and ARMv8
- x86_64
- PowerPC
- s390 Use the Open Main Frame Project to develop for it www.openmainframeproject.org/



Leap 15.3 & Conclusions

- More opportunity for GNU Health
 - More architecture
 - Dev - Productions model ideal
 - Integration is easier for new devices
 - Need more devices and innovations to expand market and integration in
- 

Question 1

Do you feel that openSUSE Leap 15.3 is moving in the right direction?

Question 2

Do you believe support for openSUSE Leap 15.3 on s390 (mainframes) can be helpful for GNU Health?

Question 3

Does having the ability to migrate from the community version of openSUSE Leap to an Enterprise version of SUSE ever come up in discussions with people who would like to deploy GNU Health?

Questions



Thank You



ddemaio@opensuse.org

